

Kentucky High School Feedback Report Class of 2004

Barbourville High School
Barbourville Independent Schools

The Kentucky High School Feedback Report is collaboratively produced by Kentucky's Council on Postsecondary Education (CPE), the Kentucky Department of Education (KDE), and the Kentucky Higher Education Assistance Authority (KHEAA) with the assistance of ACT, Inc., and The College Board. Its purpose is to provide information about this school's 2004 class of high school seniors including the number who matriculated to a postsecondary institution in Kentucky and how well they performed compared to their peers from the district and the state as a whole.

A. Basic Information About the Class of 2004

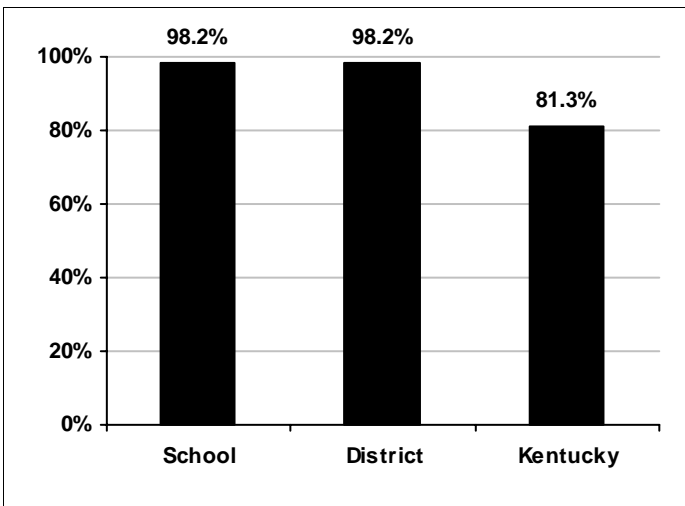
District numbers may include alternative high schools. Refer to the Technical Notes for explanation of blanks.

	School	District	Kentucky
1. Number of high school graduates:	53	53	41,328
2. Mean cumulative high school GPA:	2.82	2.82	2.81
3. Mean ACT scores for this class:			
English	21.0	21.0	20.0
Reading	21.4	21.4	21.4
Mathematics	19.5	19.5	19.9
Science	20.4	20.4	20.7
Composite	20.7	20.7	20.7
4. Number of Advanced Placement (AP) tests taken by members of this class:	17	17	7,848
5. Percentage of Advanced Placement (AP) tests with scores of 3 or higher (the minimum necessary to receive college credit):	23.5%	23.5%	46.2%
6. Mean Kentucky Educational Excellence Scholarship (KEES) award earned by members of this class:	\$1,068	\$1,068	\$1,054
7. High school graduation rate:	98.2%	98.2%	81.3%
8. In-state college-going rate:	46.6%	46.6%	50.9%

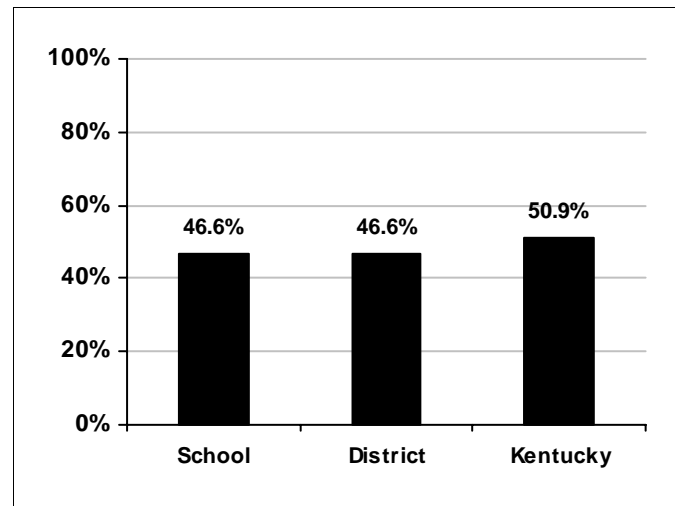
Important School Statistics

High school graduation rate:	98.2%
In-state college going rate:	46.6%
Percentage with developmental needs in one or more subjects:	43.8%
Percentage with developmental needs in English:	12.5%
Percentage with developmental needs in mathematics:	31.3%
Six-year (bachelor's degree) postsecondary graduation rate for the class of 2000:	60.0%
Three-year (associate's degree at KCTCS) postsecondary graduation rate for the class of 2003:	20.0%

High School Graduation Rate



In-State College-Going Rate



Kentucky High School Feedback Report Class of 2004

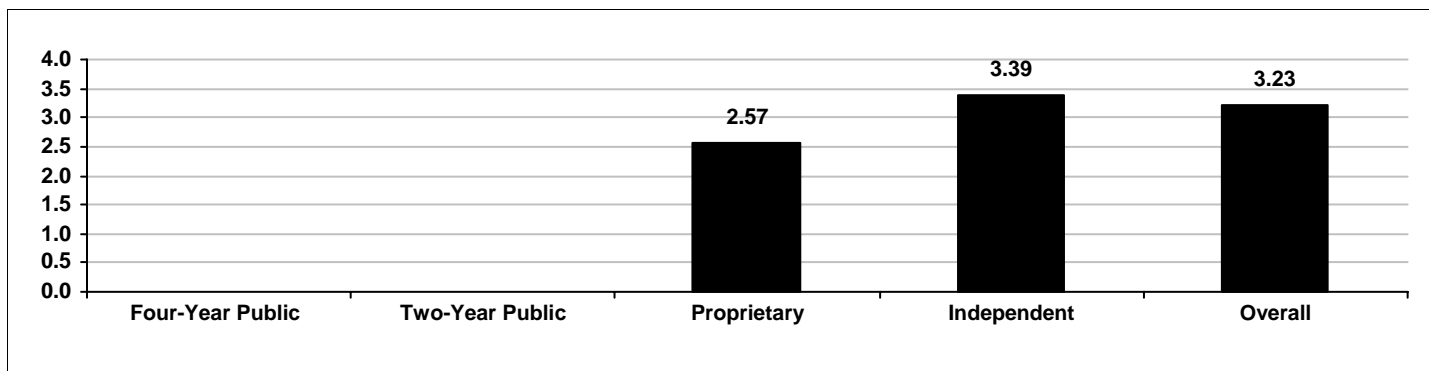
Barbourville High School
Barbourville Independent Schools

B. In-State Postsecondary Enrollment Information

This information, with the exception of item B.7, is only available for the public colleges and universities in Kentucky and the independent institutions that participate in the CPE's comprehensive database. District numbers may include alternative high schools. Refer to the Technical Notes for explanation of blanks.

	School	District	Kentucky
1. Number and percentage of this school's 2004 high school graduates who enrolled as degree- or credential-seeking students at one of Kentucky's public or participating independent postsecondary institutions in summer or fall 2004 by institution type. These data are not available for proprietary schools.			
Four-year public university:	5 26.3%	5 26.3%	11,548 60.8%
Two-year public community or technical college (KCTCS):	2 10.5%	2 10.5%	4,298 22.6%
Participating independent college or university:	12 63.2%	12 63.2%	3,147 16.6%
Total:	19	19	18,993
2. Number and percentage who entered college as full-time students:			
	18 94.7%	18 94.7%	18,075 94.7%
3. Number and percentage who entered with undeclared degree status:			
	4 21.1%	4 21.1%	2,518 13.3%
4. Number and percentage who entered a certificate or diploma program:			
	0 0.0%	0 0.0%	377 2.0%
5. Number and percentage who entered an associate's (two-year) degree program:			
	0 0.0%	0 0.0%	3,896 20.6%
6. Number and percentage who entered a bachelor's (four-year) degree program:			
	15 78.9%	15 78.9%	12,161 64.2%
7. Mean cumulative high school GPA by postsecondary institution type:			
Four-year public university:			3.27
Two-year public community or technical college (KCTCS):			2.88
Participating independent college or university:	3.39	3.39	3.31
Proprietary college, university, or school:	2.57	2.57	2.73
Overall mean for students entering any postsecondary institution in Kentucky:	3.23	3.23	3.15

Mean Cumulative High School GPA by Postsecondary Institution Type



B. In-State Postsecondary Enrollment Information (continued)

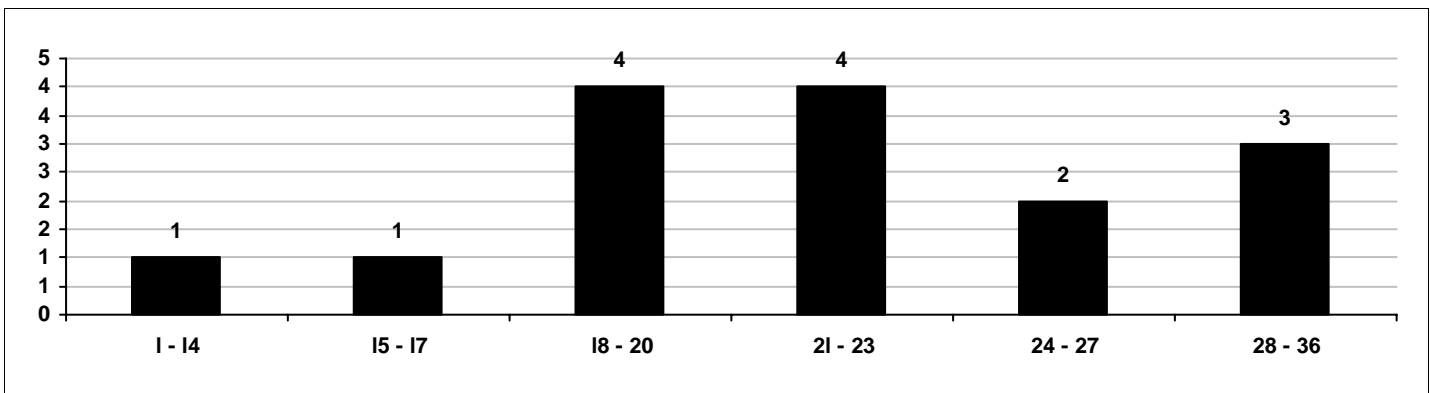
8. Mean ACT scores of postsecondary students who graduated in this school's class of 2004 by subject and institution type:

	School	District	Kentucky
English			
Four-year public university:			21.2
Two-year public community or technical college (KCTCS):			20.0
Independent college or university:	25.2	25.2	20.8
Overall mean for students entering any public or participating independent college or university:	24.9	24.9	21.1
Reading			
Four-year public university:			22.5
Two-year public community or technical college (KCTCS):			25.0
Independent college or university:	23.9	23.9	22.3
Overall mean for students entering any public or participating independent college or university:	24.2	24.2	22.4
Mathematics			
Four-year public university:			20.5
Two-year public community or technical college (KCTCS):			17.0
Independent college or university:	21.9	21.9	20.5
Overall mean for students entering any public or participating independent college or university:	21.7	21.7	20.7
Science			
Four-year public university:			21.6
Two-year public community or technical college (KCTCS):			22.0
Independent college or university:	22.8	22.8	21.3
Overall mean for students entering any public or participating independent college or university:	23.0	23.0	21.5
Composite			
Four-year public university:			21.1
Two-year public community or technical college (KCTCS):			21.0
Independent college or university:	22.1	22.1	21.2
Overall mean for students entering any public or participating independent college or university:	22.6	22.6	21.3

9. Percentage who enrolled in a public or participating independent institution in Kentucky and were identified as having developmental needs (an ACT subscore of less than 18 or an equivalent score on an alternative test by subject area):

English:	12.5%	12.5%	27.4%
Reading:	13.3%	13.3%	21.4%
Mathematics:	31.3%	31.3%	33.6%
Developmental needs in one or more subject areas:	43.8%	43.8%	44.5%

Distribution of ACT Composite for Students Who Entered Postsecondary Education



C. Student Postsecondary Performance

This information, with the exception of item C.7, is only available for the public colleges and universities in Kentucky and the independent institutions that participate in the CPE's comprehensive database. District numbers may include alternative high schools. Refer to the Technical Notes for explanation of blanks.

In Kentucky, ACT scores are used to determine if students need developmental courses before they take certain college level courses. Students are assessed as having developmental needs in English, mathematics, and reading if their ACT subscore is less than 18, or if they have an equivalent score on the SAT or another standardized placement exam. Much of the following academic performance data is presented to show how students with developmental needs perform compared to those without developmental needs.

College Grades	School	District	Kentucky
1. Percentage of this high school's 2004 class enrolling in college-level English during the first two years of college who earned a grade of "C" or better, by developmental need:			
All students:	100.0%	100.0%	84.2%
Students with an ACT English subscore less than 18 or equivalent:	100.0%	100.0%	76.2%
Students with an ACT English subscore of 18 or above or equivalent:	100.0%	100.0%	86.3%
2. Percentage of this high school's 2004 class enrolling in college-level mathematics during the first two years of college who earned a grade of "C" or better, by developmental need:			
All students:	76.9%	76.9%	74.1%
Students with an ACT mathematics subscore less than 18 or equivalent:	66.7%	66.7%	63.0%
Students with an ACT mathematics subscore of 18 or above or equivalent:	80.0%	80.0%	76.8%
3. Mean college GPA of this high school's 2004 class at the end of the first year in college:			
All students:	1.34	1.34	2.28
Students with developmental needs in one or more subjects:	0.28	0.28	1.78
Students without developmental needs:	2.16	2.16	2.68

College Retention, Credit Hours, and KEES Awards

Retention, credit hours earned, and KEES awards maintained are all influenced by a student's level of academic preparation. The following items are broken out by whether a student has developmental needs or not.

4. One semester postsecondary retention rate of enrolled freshmen (i.e., entered in fall 2004 and returned for the spring 2005 semester):			
All students:	85.7%	85.7%	89.1%
Students with developmental needs in one or more subjects:	50.0%	50.0%	83.4%
Students without developmental needs:	100.0%	100.0%	93.6%

C. Student Postsecondary Performance (continued):

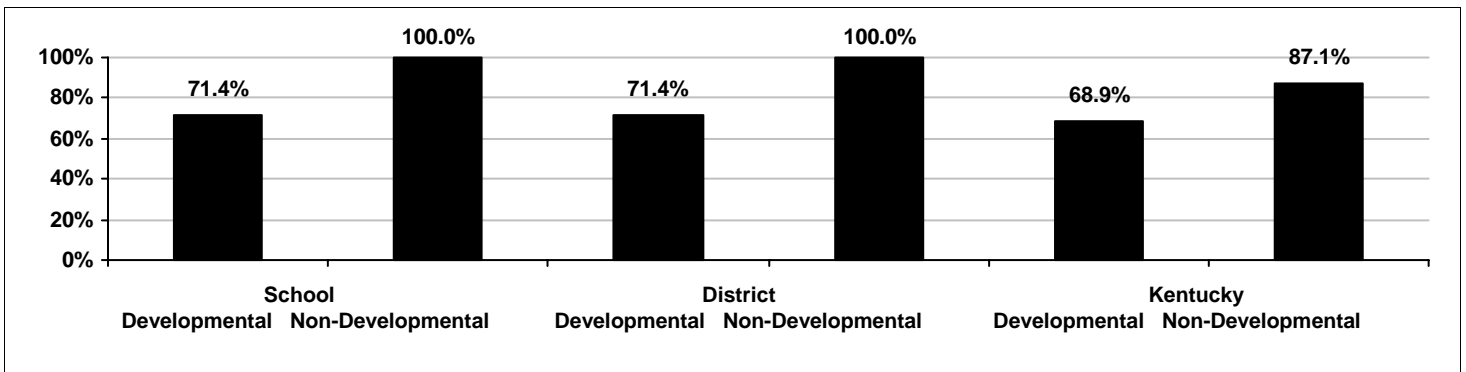
College Retention, Credit Hours, and KEES Awards (continued)

	School	District	Kentucky
5. First-to-second year postsecondary retention rate (i.e., entered in fall 2004 and returned for the fall 2005 semester):			
All students:	89.5%	89.5%	79.1%
Students with developmental needs in one or more subjects:	71.4%	71.4%	68.9%
Students without developmental needs:	100.0%	100.0%	87.1%
6. Median number of college credit hours earned during the first year in college:			
All students:	17.5	17.5	25.0
Students with developmental needs in one or more subjects:	16.0	16.0	22.0
Students without developmental needs:	18.0	18.0	28.0
7. Percentage of KEES recipients who maintained KEES awards for the second year:	70.4%	70.4%	60.6%

College Graduation Rates for Former Graduates:

8. Most recent graduation rate for students who graduated from this high school in 2003 and entered KCTCS in fall 2003 and earned an associate's degree within three years:	20.0%	20.0%	14.2%
9. Most recent graduation rate for students who graduated from this high school in 2000 and entered one of Kentucky's public four-year universities in fall 2000 and earned a bachelor's degree within six years:	60.0%	60.0%	48.2%

First-to-Second Year Postsecondary Retention Rate



D. Kentucky Institutions Students Entered

Public Four-Year Universities:

Eastern Kentucky University	3
Kentucky State University	
Morehead State University	
Murray State University	
Northern Kentucky University	
University of Kentucky	1
University of Louisville	1
Western Kentucky University	

Kentucky Community and Technical Colleges

Ashland Community and Technical College	
Big Sandy Community and Technical College	
Bluegrass Community and Technical College	
Bowling Green Technical College	
Elizabethtown Community and Technical College	
Gateway Community and Technical College	
Hazard Community and Technical College	
Henderson Community College	
Hopkinsville Community College	
Jefferson Community and Technical College	
Madisonville Community College	
Maysville Community and Technical College	
Owensboro Community and Technical College	
Somerset Community College	2
Southeast Kentucky Community and Technical College	
West Kentucky Community and Technical College	

Independent Colleges and Universities

Alice Lloyd College	1
Asbury College	
Bellarmino University	
Berea College	
Brescia University	
Campbellsville University	1
Centre College	
Georgetown College	
Kentucky Christian University	
Kentucky Wesleyan College	
Lindsey Wilson College	
Mid-Continent University	
Midway College	
Pikeville College	
Spalding University	
St. Catharine College	
Thomas More College	
Transylvania University	
Union College	2
University of the Cumberlands	8

E. College Majors

Undeclared	5
Agriculture, Agricultural Operations	
Natural Resources and Conservation	
Architecture and Related Services	
Area, Ethnic, Cultural, and Gender Studies	
Communications, Journalism, and Related Programs	
Communications Technologies/Technicians	
Computer and Information Sciences	
Personal and Culinary Services	
Education	1
Engineering	
Engineering Technologies/Technicians	
Foreign Languages, Literatures and Linguistics	
Family and Consumer Sciences/ Human Sciences	
Legal Professions and Studies	
English Language and Literature/Letters	
Liberal Arts and Sciences, General Studies	
Biological and Biomedical Sciences	4
Mathematics and Statistics	
Multi/Interdisciplinary Studies	
Parks, Recreation, Leisure, and Fitness Studies	
Philosophy and Religious Studies	
Theology and Religious Vocations	
Physical Sciences	3
Psychology	1
Security and Protective Services	
Public Administration and Social Service Prof	
Social Sciences	
Construction Trades	
Mechanics and Repair Technologies	
Precision Production	
Transportation and Materials Moving	
Visual and Performing Arts	
Health Professions and Related Clinical Sciences	
Business, Management, Marketing, Related Svcs	4
History	1

NOTE: The information on this page is only available for the public colleges and universities in Kentucky and the independent institutions that participate in the CPE's comprehensive database. Majors not reported for some students.